



## FITTING BRUSH RAILS INSTRUCTIONS FOR FORD RANGER PX

TUFF BULLBARS AUSTRALIA,  
6 Tews CT, (P.O. Box 1977)  
Torrington,  
Toowoomba,  
Queensland 4350,  
AUSTRALIA



Ph: **1300 BE TUFF** (1300 23 88 33)  
Fax: 07 4633 1236  
[sales@tuffbullbars.com.au](mailto:sales@tuffbullbars.com.au)  
[admin@tuffbullbars.com.au](mailto:admin@tuffbullbars.com.au)  
[feedback@tuffbullbars.com.au](mailto:feedback@tuffbullbars.com.au)  
[www.tuffbullbars.com.au](http://www.tuffbullbars.com.au)

### FORD RANGER PX BRUSH RAILS - BOLT KIT

D/Cab	S/Cab	
4	4	170mm x 12mm threaded rod
8	4	150mm x 12 threaded rod
22	14	12mm Normal Nuts
22	14	12mm Spring Washers
18	12	40mm x 10mm Bolts
40	28	10mm Flat Washers
20	14	10mm Nylock Nuts
6	4	Chassis Brackets
6	4	Extension Brackets
6	4	215mm Backing Plates
2	2	(spigot bolts) 10mm Bolts
		Options: Bolt On Spigots Double Rails =12 x 10mm bolts & nuts & washers Single Rails =6 x 10mm bolts & nuts & washers

[www.tuffbullbars.com.au](http://www.tuffbullbars.com.au)

**1300 BE TUFF**

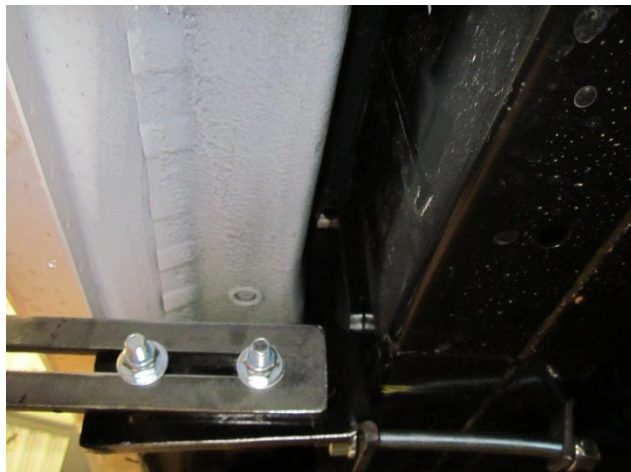
**TUFF BY NAME \* TUFF BY NATURE**

**AUSTRALIA'S LEADING BULLBAR  
MANUFACTURER**





## FITTING BRUSH RAILS INSTRUCTIONS FOR FORD RANGER PX



CLAMP BRACKETS TO CHASSIS (6 BRACKETS FOR DUAL CAB & 4 BRACKETS FOR SINGLE CAB & EXTRA CAB)



ATTACH - L SHAPED SLOTTED BRACKETS LOOSELY TO CHASSIS BRACKETS – BRACKETS POINT BACKWARDS

AS SHOWN IN PICTURE



SLIDE BRUSH RAILS ONTO SPIGOT/SPIGOTS ON BULLBAR



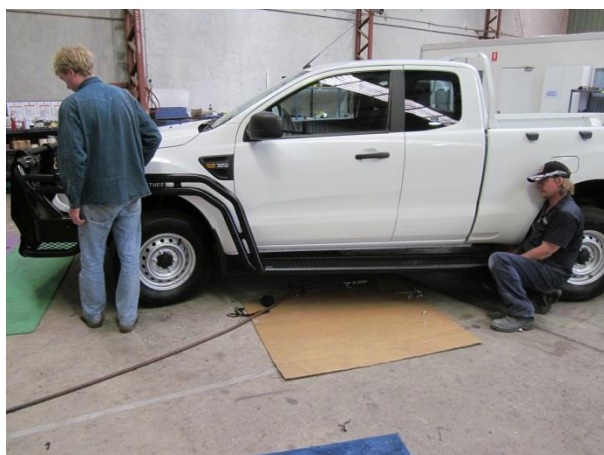
## FITTING BRUSH RAILS INSTRUCTIONS FOR FORD RANGER PX



ALIGN RAIL – STEP LEVEL (USE A JACK TO HOLD STEP UP)

FIT BOLTS FROM STEP TO SLOTTED L BRACKETS, TIGHTEN & ALIGN ALL BRACKETS

\*\*For the Extra cab there is 2 per side and for the Dual Cab there is 3 per side \*\*



Slide Rails onto Spigots of Bar







## FITTING BRUSH RAILS INSTRUCTIONS FOR FORD RANGER PX



PLEASE DON'T HESITATE TO CALL US ON **1300 BE TUFF** (1300 23 88 33) IF  
YOU HAVE ANY PROBLEMS WITH FITTING

BEST REGARDS, THE TUFF TEAM! 😊