



FITTING BRUSH RAILS INSTRUCTIONS FOR MAZDA BT-50 B32P

TUFF BULLBARS AUSTRALIA,
5-7 Holt Drive, (P.O. Box 1977)
Torrington,
Toowoomba,
Queensland 4350,
AUSTRALIA



Ph: **1300 BE TUFF** (1300 23 88 33)
Fax: 07 4633 1236
sales@tuffbullbars.com.au
admin@tuffbullbars.com.au
feedback@tuffbullbars.com.au
www.tuffbullbars.com.au

MAZDA BT-50 B32P BRUSH RAILS - BOLT KIT

| D/Cab | S/Cab | |
|-------|-------|---|
| 4 | 4 | 170mm x 12mm threaded rod |
| 8 | 4 | 150mm x 12 threaded rod |
| 22 | 14 | 12mm Normal Nuts |
| 22 | 14 | 12mm Spring Washers |
| 18 | 12 | 40mm x 10mm Bolts |
| 40 | 28 | 10mm Flat Washers |
| 20 | 14 | 10mm Nylock Nuts |
| 6 | 4 | Chassis Brackets |
| 6 | 4 | Extension Brackets |
| 6 | 4 | 215mm Backing Plates |
| 2 | 2 | (spigot bolts) 10mm Bolts |
| | | Options: Bolt On Spigots Double Rails =12 x 10mm bolts & nuts & washers Single Rails =6 x 10mm bolts & nuts & washers |

www.tuffbullbars.com.au

1300 BE TUFF

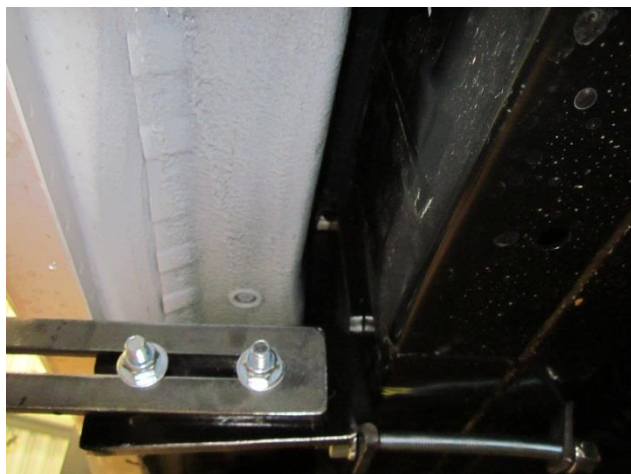
TUFF BY NAME * TUFF BY NATURE

**AUSTRALIA'S LEADING BULLBAR
MANUFACTURER**





FITTING BRUSH RAILS INSTRUCTIONS FOR MAZDA BT-50 B32P



CLAMP BRACKETS TO CHASSIS (6 BRACKETS FOR DUAL CAB & 4 BRACKETS FOR SINGLE CAB & EXTRA CAB)



ATTACH - L SHAPED SLOTTED BRACKETS LOOSELY TO CHASSIS BRACKETS – BRACKETS POINT BACKWARDS

AS SHOWN IN PICTURE



SLIDE BRUSH RAILS ONTO SPIGOT/SPIGOTS ON BULLBAR



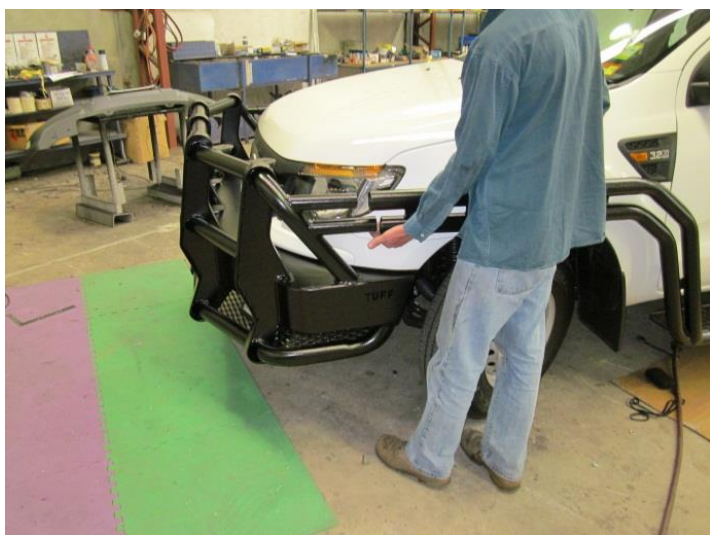
FITTING BRUSH RAILS INSTRUCTIONS FOR MAZDA BT-50 B32P



ALIGN RAIL – STEP LEVEL (USE A JACK TO HOLD STEP UP)

FIT BOLTS FROM STEP TO SLOTTED L BRACKETS, TIGHTEN & ALIGN ALL BRACKETS

**For the Extra cab there is 2 per side and for the Dual Cab there is 3 per side **



Slide Rails onto Spigots of Bar



FITTING BRUSH RAILS INSTRUCTIONS FOR MAZDA BT-50 B32P



PLEASE DON'T HESITATE TO CALL US ON **1300 BE TUFF** (1300 23 88 33) IF
YOU HAVE ANY PROBLEMS WITH FITTING

BEST REGARDS, THE TUFF TEAM! 😊