

## **NISSAN NAVARA D40 - 2007 BULLBAR FITTING KIT**

6	12mm flat washers
4	50mm x 10mm bolts
6	12mm x 40mm x 1.25 fine thread bolts
6	12mm spring washers
8	Tech screws
8	¼ x 1 ¼ mudguard washers
4	10mm Nylock Nuts
8	10mm Flat washers
2	Inner guard brackets
2	3/16'' bolts & nuts
2	Bullbar Brackets
2	Indicators (brytec)
2	Indicator leads
6	Wire tap connectors
2	7'' Rubbers

TUFF BULLBARS AUSTRALIA P/L

P.O. Box 1977

5 Holt Drive

TOOWOOMBA

QLD 4350



P: 07 4633 1240

F: 07 4633 1236

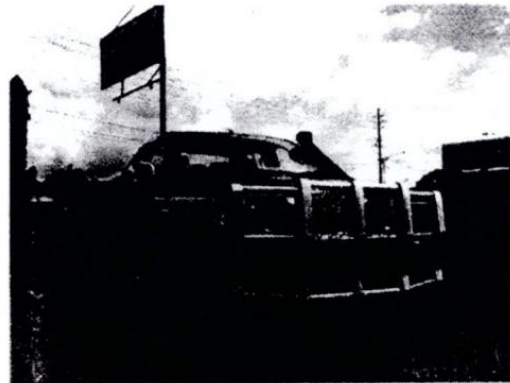
[sales@tuffbullbars.com.au](mailto:sales@tuffbullbars.com.au)

[admin@tuffbullbars.com.au](mailto:admin@tuffbullbars.com.au)

[www.tuffbullbars.com.au](http://www.tuffbullbars.com.au)

## FITTING INSTRUCTIONS

### NISSAN NAVARA D40 2007--



#### Fitting Instructions:

Using 25mm masking tape, run a line across bumper using indent in bumper as a straight edge for tape.

Remove bumper.

Remove top 2 bolts from crashbox and the tow point to make way for brackets.

Connect indicator wiring using scotch lock connectors.

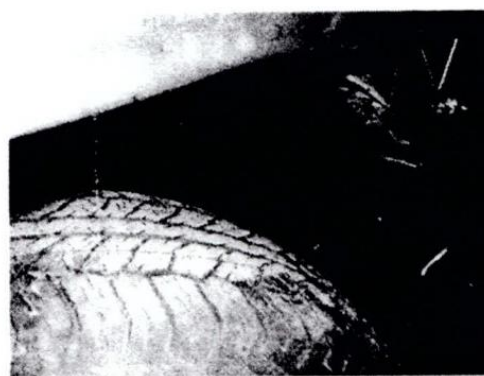
Fit brackets to sides of chassis. Use 12mm fine thread bolts with flat and spring washers.

Cut bumper along top edge of masking tape as above. Clean cut edge and refit bumper.

Fit rubber pads over bull bar studs. Mount bull bar and tighten the 12mm nuts. Adjust tightness of upper and lower bolts to level the bar (check at the wings). Leave at least 15 mm gap between bull bar and plastic bumper.

Fit the 2 lengths of 25mm RHS to the tags provided on the bottom rail of the bull bar, and to the holes drilled in the mounting brackets Use 10 x 50mm bolts, nuts and washers).

Finally, use tek screws and secure inner wheel arch liner to wing of bull bar and make a strap for the inner guard liner as shown below..



## Siderails

### Bolt list:

18 ea 40 x 10bolts, 18 nuts, 36 flat washers, 18 spring washers

4 50 x 12 bolts 4 nuts, 8 flat washers, 4 spring washers

8 ea 120 x 12 threaded rod, 16 nuts, 16 spring washers

6 chassis brackets

6 extension brackets

#### 4 backing plates

#### Fitting Instructions:

Remove steps if fitted to vehicle.

Fit brackets to chassis

Fit brackets with extensions using 40 x 10 bolts.

Slide rails onto bar spigots and bolt to extension brackets using 40 x 10 bolts.

Ensure bar lip is level to sill of vehicle and tighten all bolts. Drill hole down through top rail tube, spigot and bolt tight

