

TUFF BULLBARS AUSTRALIA

6 Tews Ct, (PO Box 1977)
TOOWOOMBA QLD 4350
Phone: 1300 BE TUFF
(1300 23 8833)
Fax: (07) 4633 1236



sales@tuffbullbars.com.au
marketing@tuffbullbars.com.au
feedback@tuffbullbars.com.au
www.tuffbullbars.com.au

BRUSHRAIL Fitting instructions to fit TUFF Brushrail and Side Steps to TOYOTA HILUX MY16

Estimated fit time: 2 hours



Call 1300 BE TUFF (1300 23 8833) for assistance



Read Fitting instructions carefully before fitting product to vehicle

- ❖ When installed in accordance with these instructions, the front protection bar does not affect operation of the SRS airbag. This product has been tested for Air Bag Compatibility and therefore the mounting system **MUST NOT** be modified
- ❖ This product must be installed exactly as per these instructions using only the parts supplied
- ❖ In the event of damage to any bullbar component, contact the tuff team ASAP
- ❖ Do not use this product for any vehicle make or model, other than those specified by tuff
- ❖ Do not remove any labels from the bullbar and/or brush rails & steps
- ❖ Bullbar installations should be done by a qualified person and it is the responsibility of this person to ensure correct fitment

Tools suggested for fitment

18mm spanners and sockets
17mm spanners and sockets
16mm spanner and sockets
6mm hex bit
Trolley jack

Bolt and Bracket kit for fitment

Scab or Ecab	Dcab	Items sent	Items received (your check list)
16	24	12mm nuts	
16	24	12mm spring washers	
16	24	12mm flat washers	
28	38	10mm flat washers	
14	20	10mm nuts	
12	18	10mm x 40 bolts	
2	2	10mm x ? spigot bolts	
4	6	215mm backing plates	
8	12	12mm x 145mm threaded rod	



**Read through the fitting instructions and pictures below.
Fitting video to come shortly**



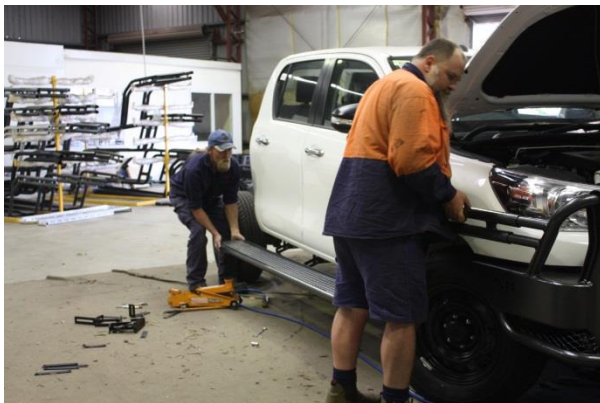
Prepare the Brushrails ready for fitment:

Lay out the brackets, bolts, washer and nuts that you will need for each of the Brushrail brackets

(6 brackets for dual cab & 4 brackets for single cab & extra cab)

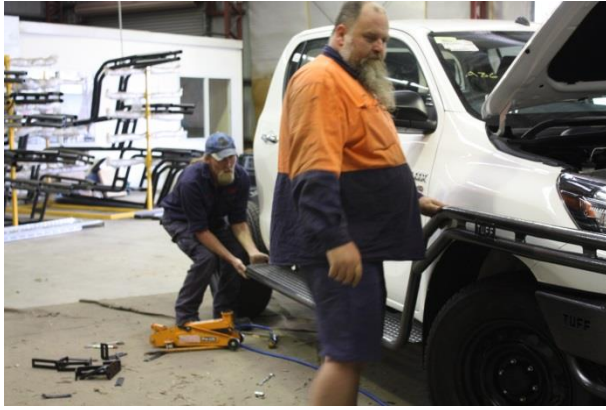


Attach - L shaped slotted brackets loosely to chassis brackets – brackets point backwards



Slide brush rails onto spigot/spigots on Bullbar

For safety reasons, it is recommended to do this with two people



Cont. Prepare the vehicle ready for fitment:

Align rail – step level (use a jack to hold step up)

Fit bolts from step to slotted I brackets, tighten & align all brackets

(please note, the image for this part is not from the new HILUX and will be updated in the future.)

Drill an 11mm hole vertically down through top of rail & spigot & insert bolt & tighten to fasten rail to spigot



Job completed!



PLEASE DON'T HESITATE TO CALL US ON **1300 BE TUFF** (1300 23 88 33) IF YOU
HAVE ANY PROBLEMS WITH FITTING

BEST REGARDS THE TUFF TEAM!