



FITTING INSTRUCTIONS FOR TOYOTA LAND CRUISER 100 SERIES WAGON

TUFF BULLBARS AUSTRALIA,
5-7 Holt Drive, (P.O. Box 1977)
Torrington,
Toowoomba,
Queensland 4350,
AUSTRALIA



Ph: **1300 BE TUFF** (1300 23 88 33)
Fax: 07 4633 1236
sales@tuffbullbars.com.au
admin@tuffbullbars.com.au
feedback@tuffbullbars.com.au
www.tuffbullbars.com.au

TOYOTA LAND CRUISER 100 SERIES WAGON (NON TURBO)

- BULLBAR BOLT & BRACKET KIT

2	12mm x 40mm 1.25 fine thread bolts
2	12mm spring washers
2	12mm flat washers
4	40mm x 10mm bolts
4	10mm spring washers
4	10mm flat washers
4	40mm x 10mm bolts
2	130mm x 12mm bolts
4	50mm x 10mm bolts
4	10mm nuts
8	10mm flat washers
2	12mm Nylock Nuts
2	3/16" bolts & nuts
2	Bullbar Brackets
2	Indicators (brytec)
2	Indicator leads
6	Wire tap connectors
2	7" Rubbers

www.tuffbullbars.com.au

1300 BE TUFF

TUFF BY NAME * TUFF BY NATURE

**AUSTRALIA'S LEADING BULLBAR
MANUFACTURER**

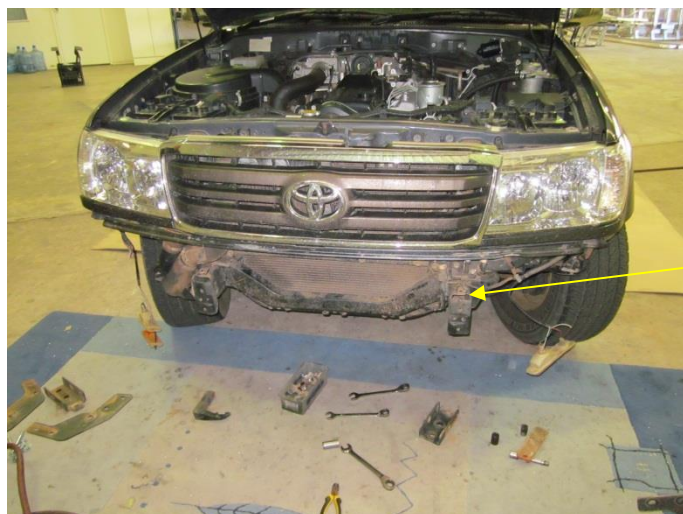




FITTING INSTRUCTIONS FOR TOYOTA LAND CRUISER 100 SERIES WAGON



Remove the grill by removing 3 screws from the top of the grill. Then release 2 clips from the bottom of the grill and remove grill.

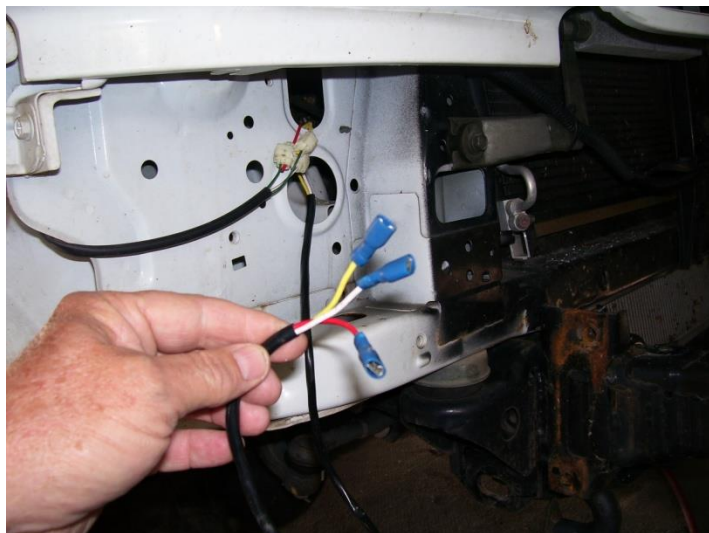


Remove bumper, and then remove tow point so the brackets can be attached to the chassis rails. Re-attach the tow point to opposite sides to what they came off, below the brackets using existing bolts for tow points and 130 x 12mm bolts for the top of the bracket through the chassis.





FITTING INSTRUCTIONS FOR TOYOTA LAND CRUISER 100 SERIES WAGON



Connect wiring kit to wiring harness using wire taps or solder

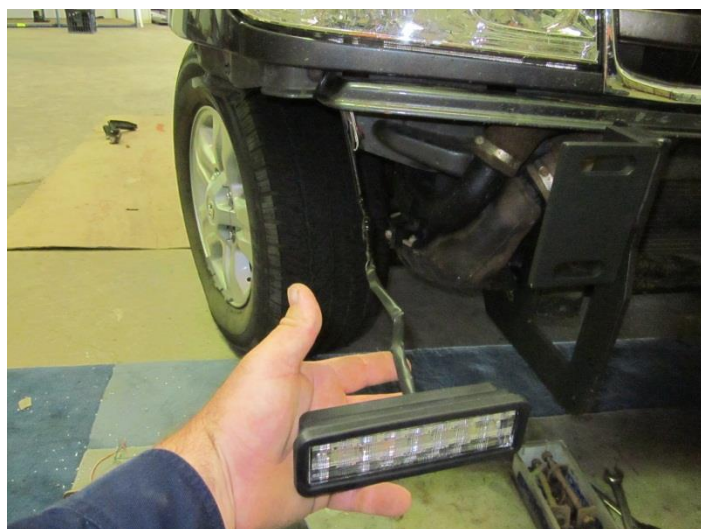
Wiring goes under and behind headlights

TIP: Try out LED lights before you fit bulbar

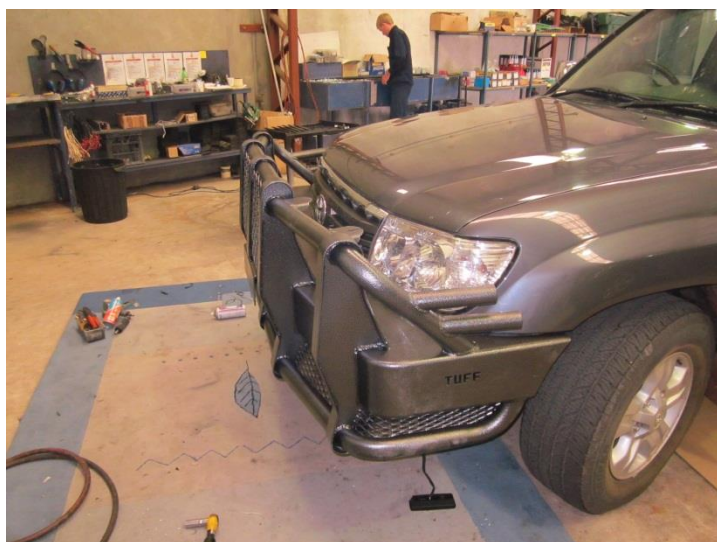
YELLOW = INDICATOR

WHITE = EARTH

BLACK = PARK



To attach the indicators remove headlight to gain access to the wiring for the park & indicator lights. Attach wiring behind headlight using the scotch locks provided or solder wiring and attach indicator and tape up the connections.



Mount the bullbar to brackets using the 12mm flats & nylock nuts provided. Centralise the bullbar and tighten nuts. The bullbar should sit approximately 10mm from guards.

Tip: If the bullbar is sitting higher than desired, tighten the top nuts more than the bottom to pull the bar down. Or if the bar is sitting lower than desired tighten the bottom nuts more than the top nuts.



FITTING INSTRUCTIONS FOR TOYOTA LAND CRUISER 100 SERIES WAGON



Connect 25 x 25 RHS Stabiliser Rod between the bullbar and the bracket as shown

Holes in RHS will have to be marked and drilled.

Use two 10 x 50 Bolts, Nuts & Washers per stabiliser.

Fit number plate and indicator/park lights – connect lights into wiring harness

Use 3mm Bolts and Nuts supplied

PLEASE DON'T HESITATE TO CALL US ON **1300 BE TUFF** (1300 23 88 33) IF YOU HAVE ANY PROBLEMS WITH FITTING

BEST REGARDS THE TUFF TEAM! 😊